

Customer :

customer

Customer part :

customer part

Comment :

Comment

S1=0.02

S2=0.08

Tmax=353

Tp S2=392.0

PI=0.23

HI=10

Sample =12301.3

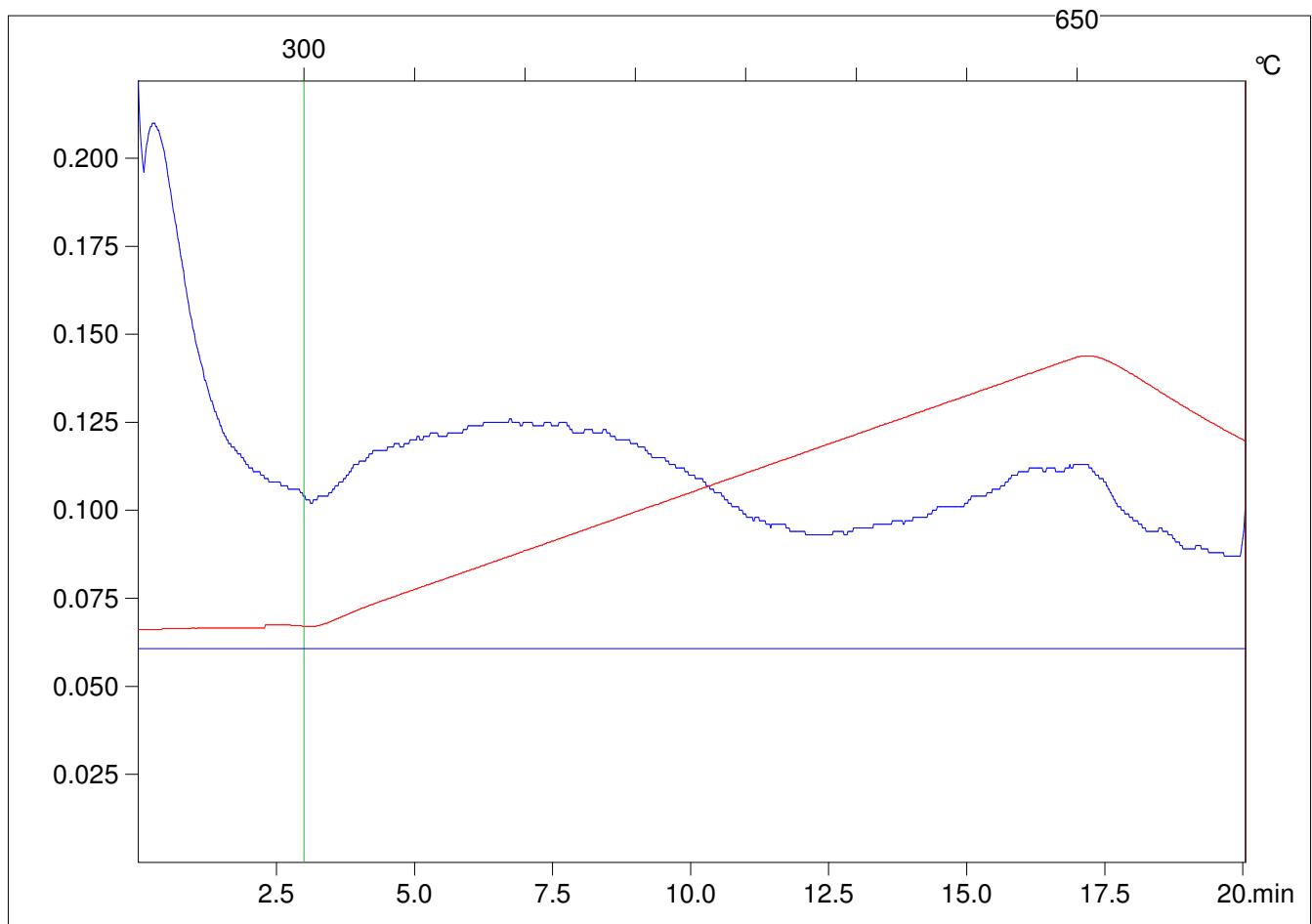
Method =Bulk Rock

Cycle=Basic

KFID(10\*9)=1167

Qty =70.5

TOC=0.81



C:\VINC\PK141015\PK038.R00 : FID pyrolysis graphic

State

Pyro Status

Oxi Status